



TARA ELECTRIC VEHICLES

# TARA SPIRIT PLUS

DIMENSION: 99.6x48x77 INCH



## POWER



6.3KW Motor With EM Brake



400A AC Controller



17A On-board Charger



Top Speed 13-25mph

MODEL: L48110





# VEHICLE FEATURES

DIMENSIONS		GENERAL		SPECIFICATION	
EXTERNAL DIMENSION	99.6x48x77inch	TIRE SIZE	12" Aluminum wheel 205/50R12	SYSTEM VOLTAGE	48V
WHEELBASE	64.7inch	SEATING CAPACITY	Two pass	MOTOR POWER	6.3KW with EM brake
FRONT WHEEL TREAD	47.24inch	SOUND BAR	No Sound Bar	CHARGING TIME	3-5h
REAR WHEEL TREAD	47.64inch	BODY	Easy-to-remove body	CONTROLLER	400A
BRAKING DISTANCE	≤9.8feet	AVAILABLE SEAT COLORS	Black, Beige, Brown, Khaki	MAX SPEED	13mph
MIN TURNING RADIUS	≤9.8feet	COLORS	Sandstone White Beige Green Silver PPG: Portimao Blue	MAXIMUM GRADABILITY (FULL LOAD)	25%
CURB WEIGHT	860lbs			BATTERY	48V Lithium battery
MAX TOTAL MASS	1190lbs	TOUCHSCREEN	9"Bluetooth Touchscreen (Radio, Music, Speedometer Bluetooth, Back-up camera Car-net APP connection)		
SUSPENSION SYSTEM	Front: double wishbone independent suspension Rear: leaf spring suspension				



Adjustable steering column



Control switches



Stereo system with lights



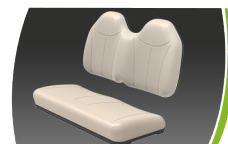
Cup holder



Built-in refrigerator (option)



Storage compartment with golf ball & tee holder



Foam rise golf course seat (option)

## Color Matching Standard

