



TARA ELECTRIC VEHICLES

TARA SPIRIT PLUS

DIMENSION: 2530x1220x1956MM



POWER

LITHIUM
BATTERY

MODEL: L48105



6.3KW Motor
with EM Brake



400A
AC Controller



17A
Charger



Top Speed
20 km/h



DIMENSIONS

- External Dimension: 2530x1220x1956mm
- Wheelbase: 1642.48 mm
- Front Wheel Tread: 995 mm
- Rear Wheel Tread: 1005 mm
- Braking Distance: ≤ 3 m
- Min Turning Radius: ≤ 3 m
- Curb Weight: 390 kg
- Max Total Mass: 540 kg
- Tire: 12" aluminum wheel 205/50R12

STANDARD COLOR MATCHING



ARCTIC GRAY



BEIGE



MINERAL WHITE



GREEN



PORTIMAO BLUE

SPECIFICATION

- Seating Capacity: two pass
- Body: easy-to-remove body
- System Voltage: 48 V
- Motor Power: 6.3 KW with EM brake
- Charging Time: 3-5 h
- Controller: 400 A
- Maximum Gradability(Full Load): 25%
- Suspension:
Front: double wishbone independent suspension
Rear: leaf spring suspension



Golf ball washer



Sand bottle



12" Aluminum wheel 205/50R12



Golf bag holder and storage basket



Caddy master cooler



LED headlights /Taillights



Golf bag cover with retractable mechanism



VEHICLE FEATURES



Adjustable steering column



Control switches



Stereo system with lights



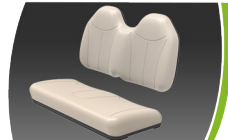
9" Bluetooth touchscreen



Storage compartment



Cuboid sound bar



Foam rise golf course seat (option)

* Color discrepancies may occur in the images due to differences in lighting, display settings, and printing. Please refer to the actual products for accurate color representation.

CONTACT US



sales@taragolfcart.com
www.taragolfcart.com
TARA Spirit Plus Sell Sheet v1.1 May. 10, 2025



TARA
ELECTRIC VEHICLES